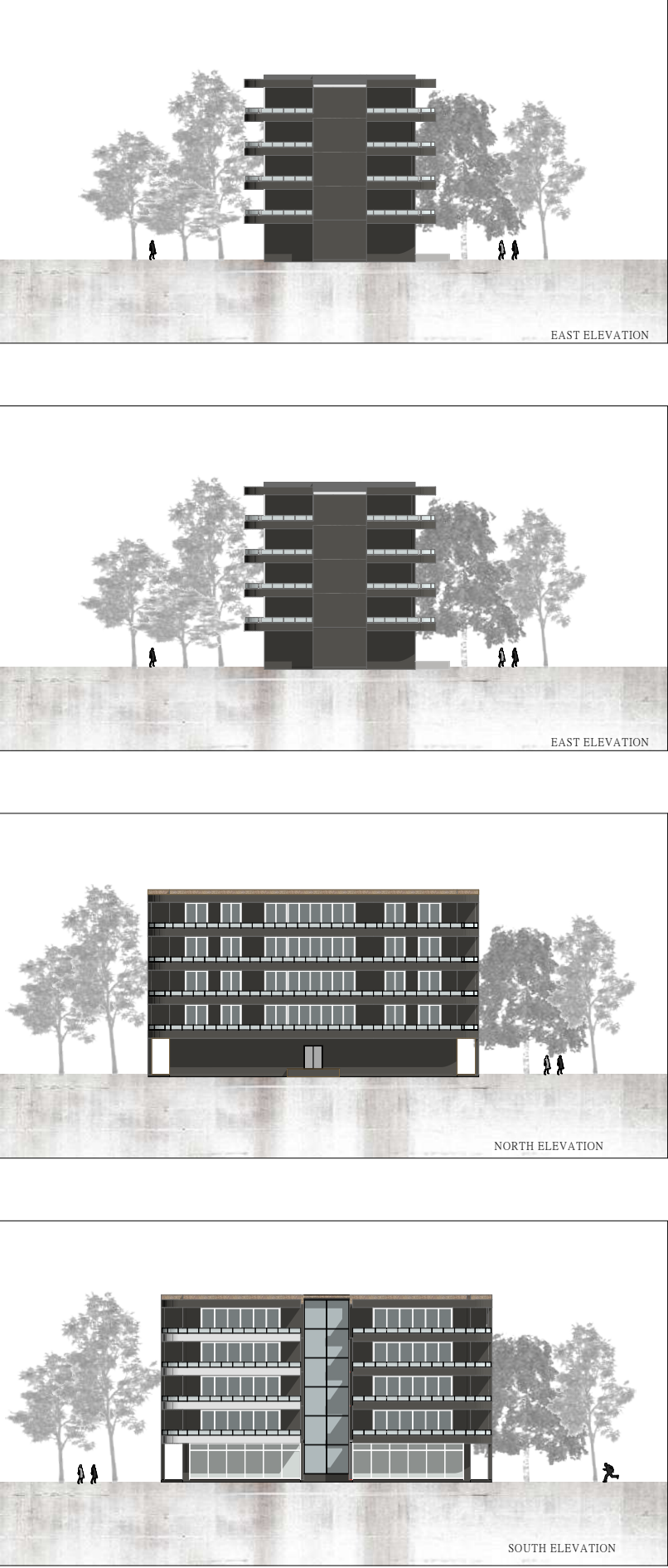
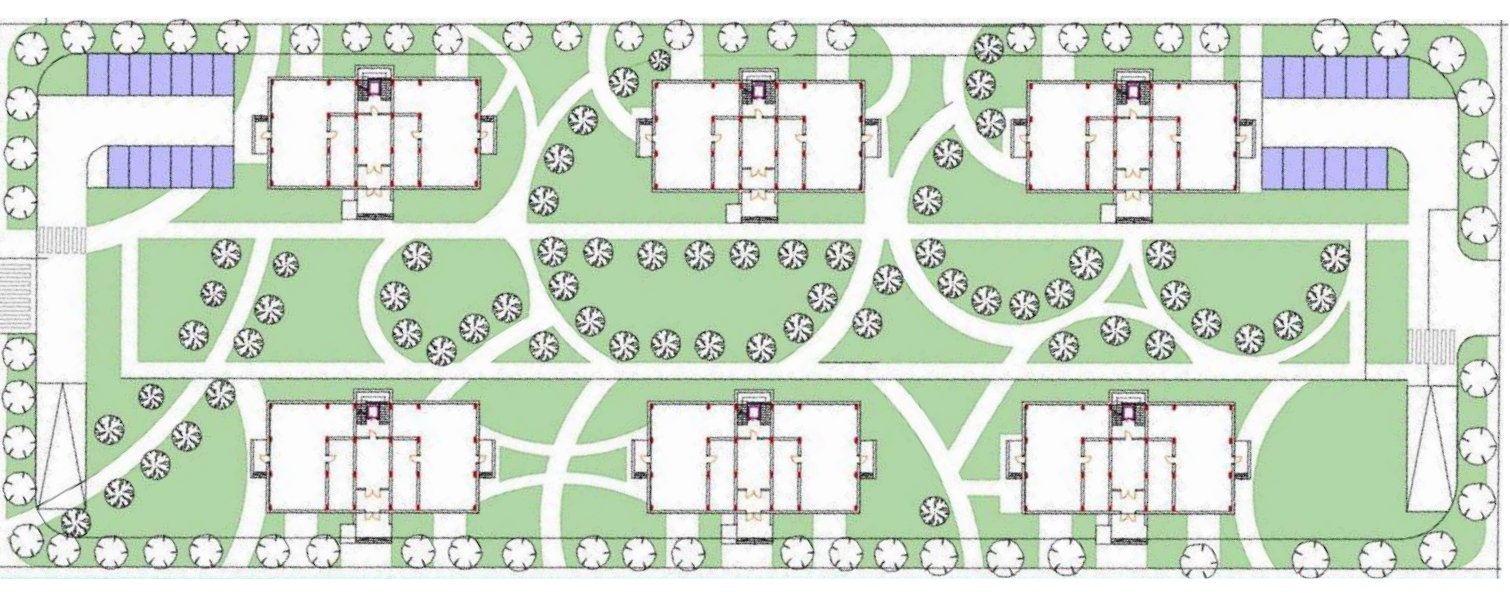


Rasadnik district - City quarter J 14, as a part of the Municipality of Kisela Voda, represents one of the most important links in the urban chain of the Macedonian capital. As one of the last green oases in this part of Skopje, the approach of our team was focused not just to implement the requirements from the contracting authority, Municipality of Kisela Voda. Besides the necessity of huge percentage of organized open green public spaces, and their needs of new public buildings and new internal pattern of pedestrian and bicycle infrastructure, we were also aware of the importance of not only preserving the local surrounding context, but we also acted in a way to increase the value of the citizens and their property in every sense and to improve the living human conditions of the existing residential surrounding area.

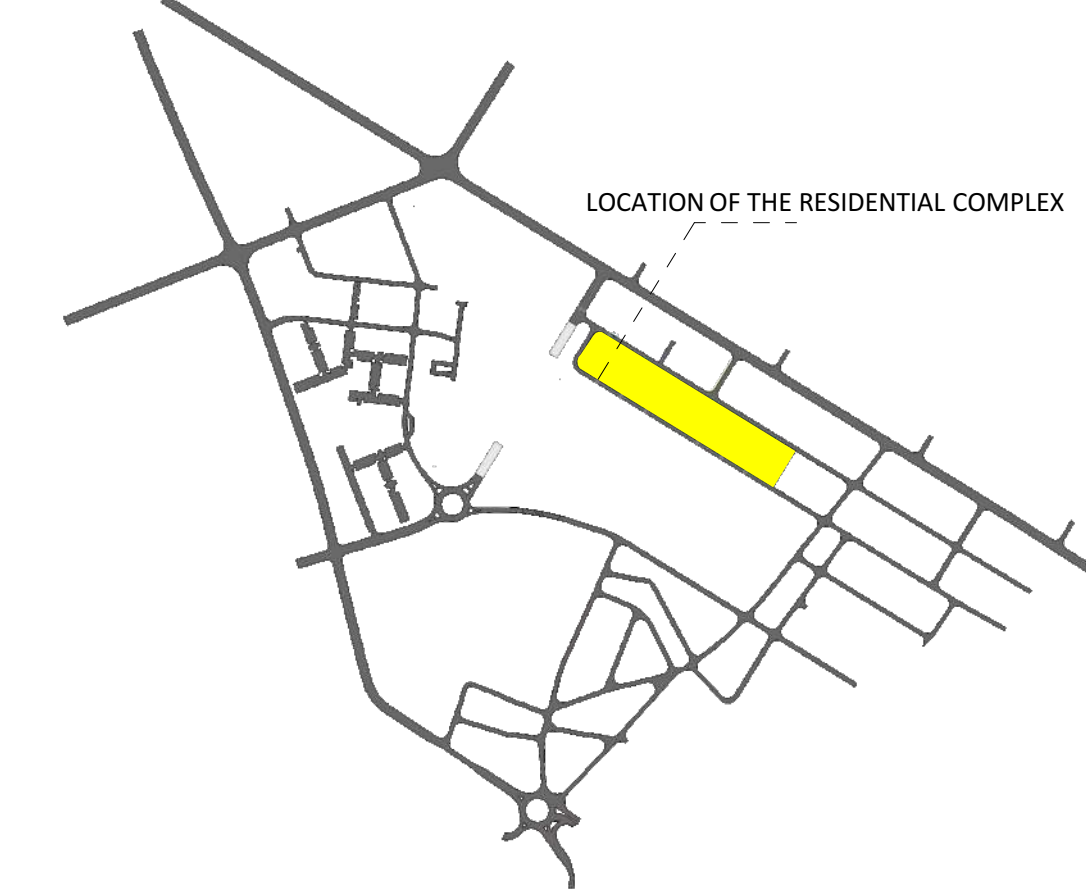
ELEVATIONS



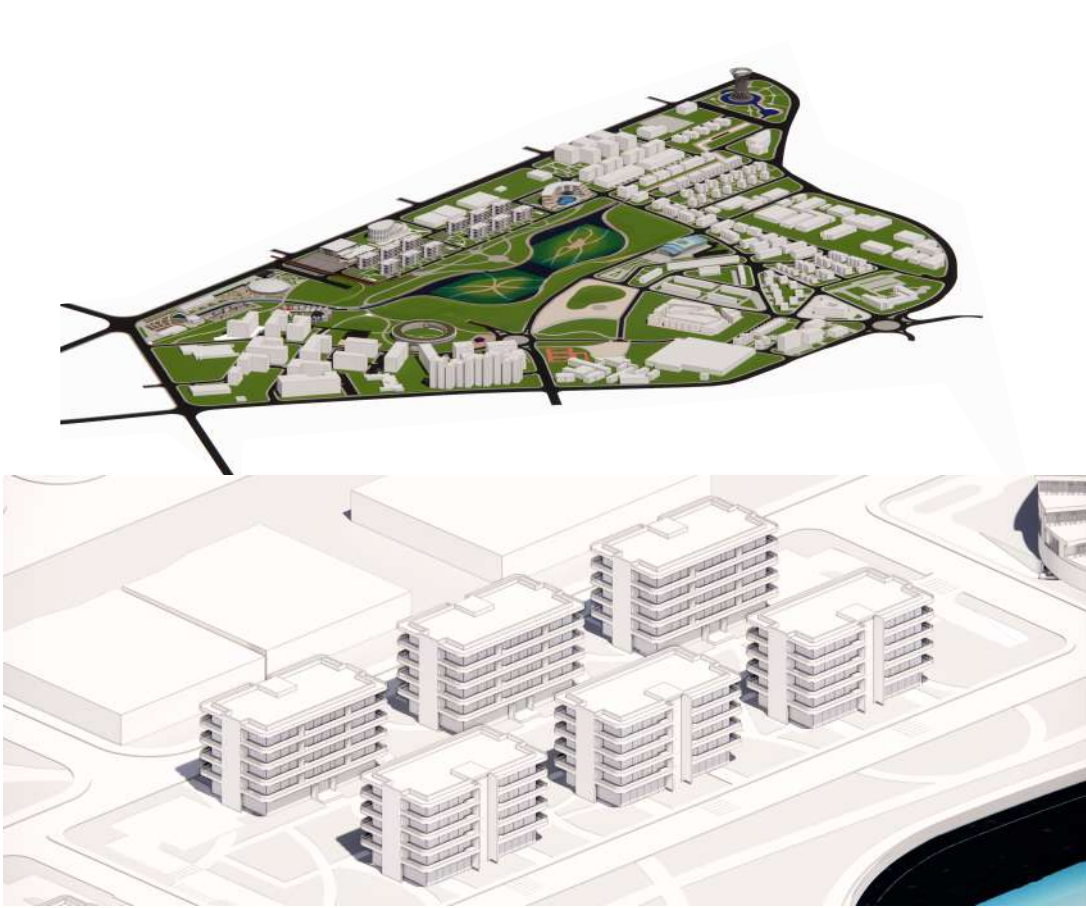
PARTERRE ORGANIZATION



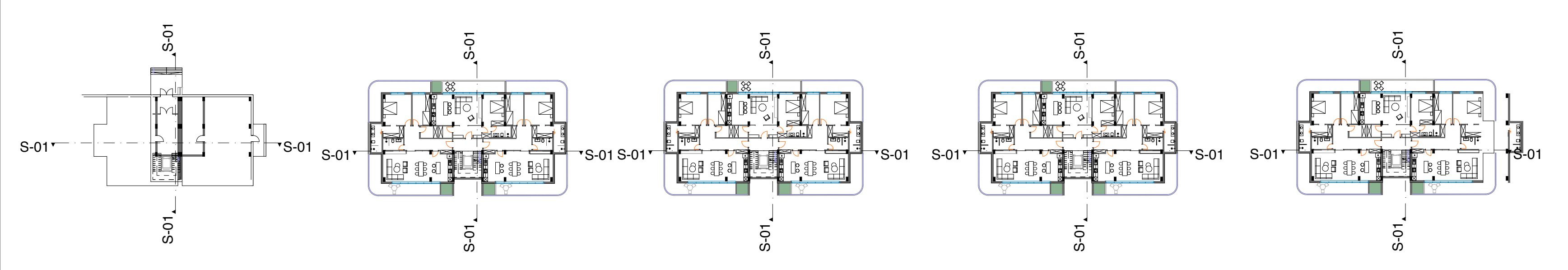
LOCATION



AXONOMETRY



PLAN



RENDER





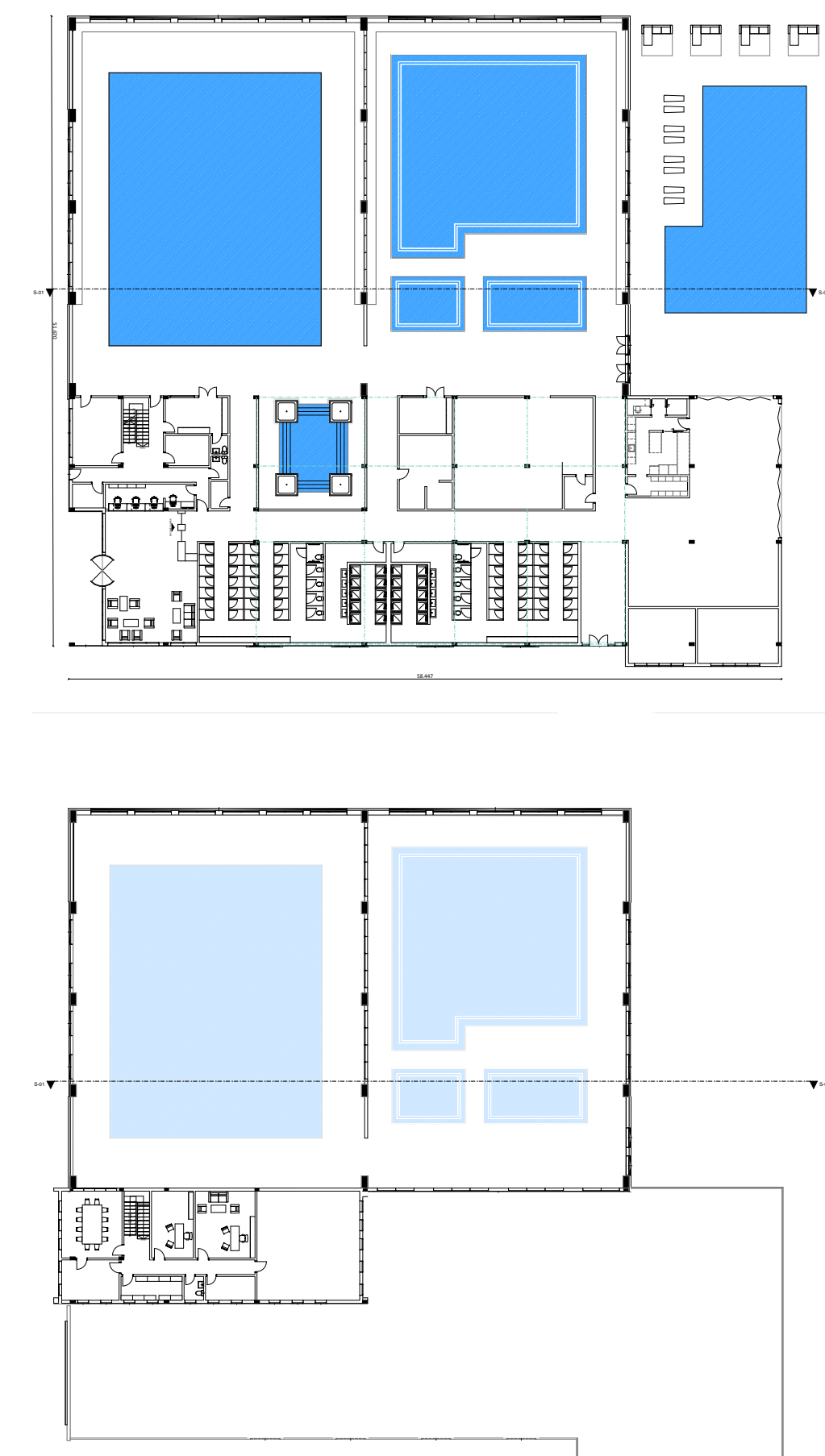
The sport, as one of the most important elements in modern life stile is reflected in many ways in our project: The New Swimming pool, kayaking in the new lake and canal (1500 meters in one way), running around the lake, two open sport field areas (between the school and kindergarten and the tennis courts), biking in the selected and organized infrastructure in the quarter and the surrounding areas.

The safety for its residents is also enhanced by the introduction of underground street that will enable direct pedestrian and bike connections between the school and the kindergarten and the Central Park without direct crossing any street.

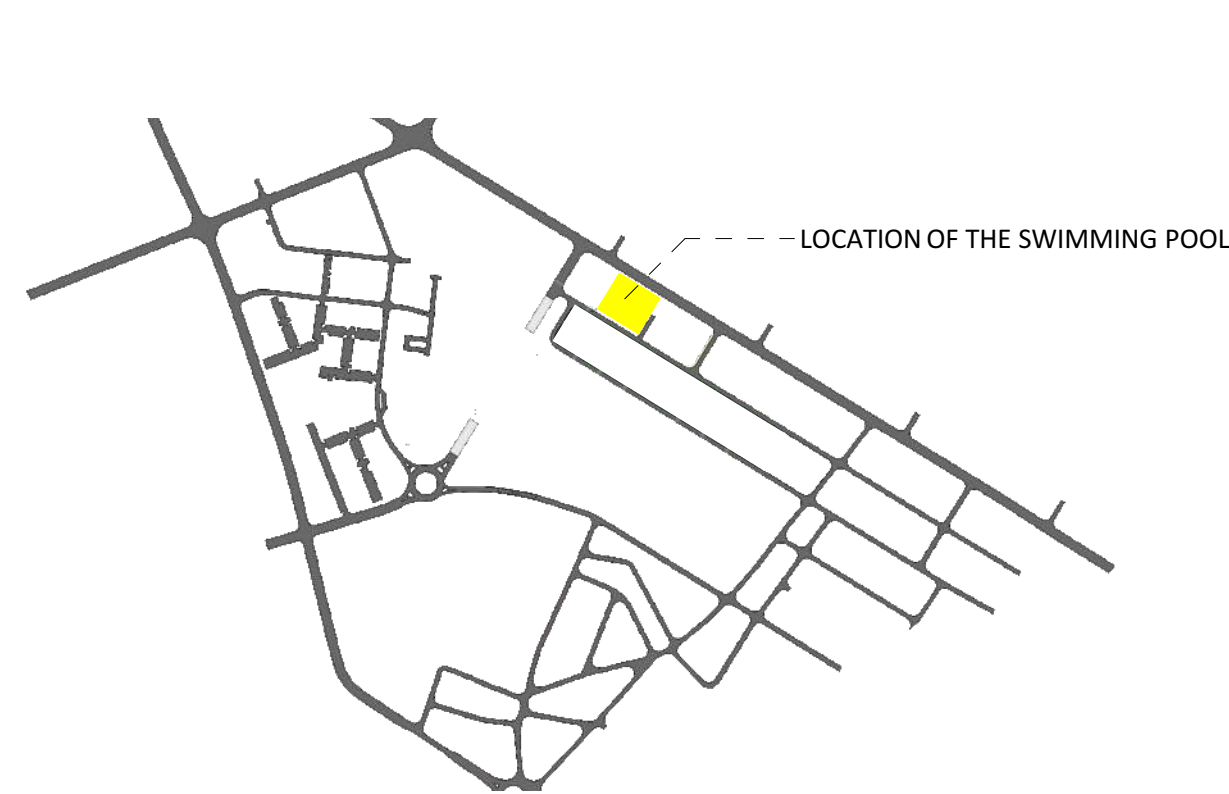
ELEVATIONS



PLANS



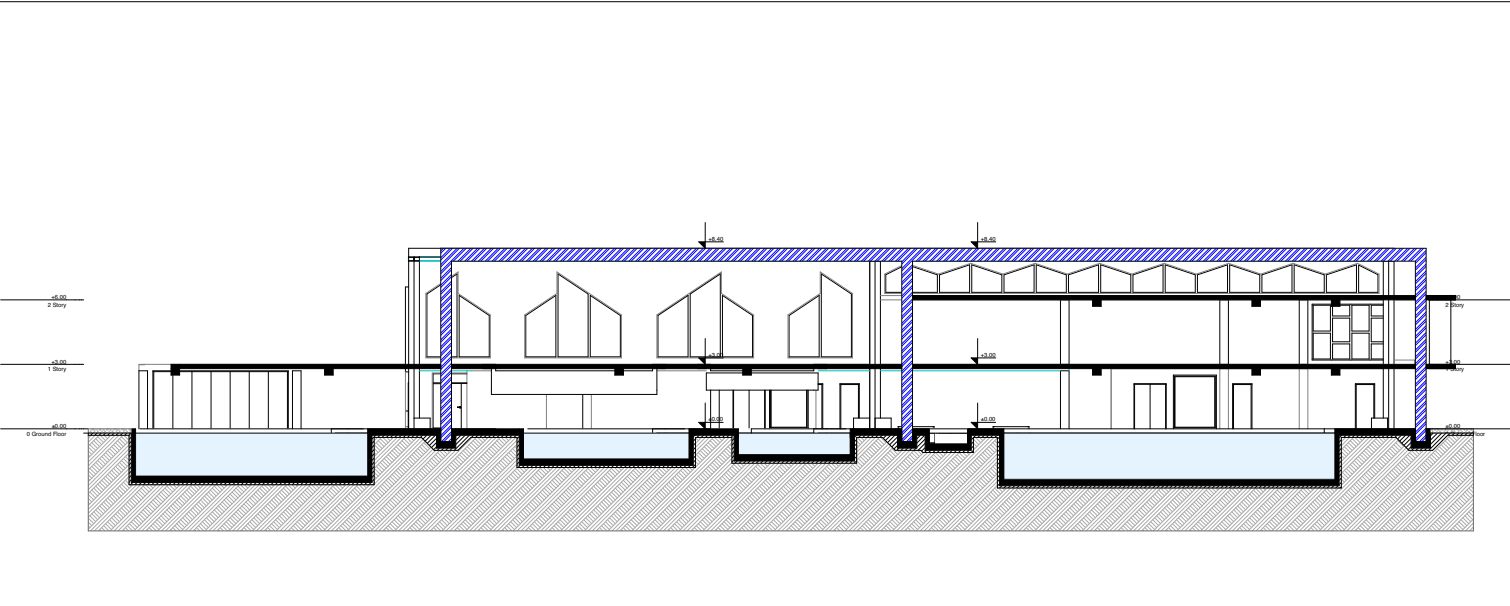
LOCATION



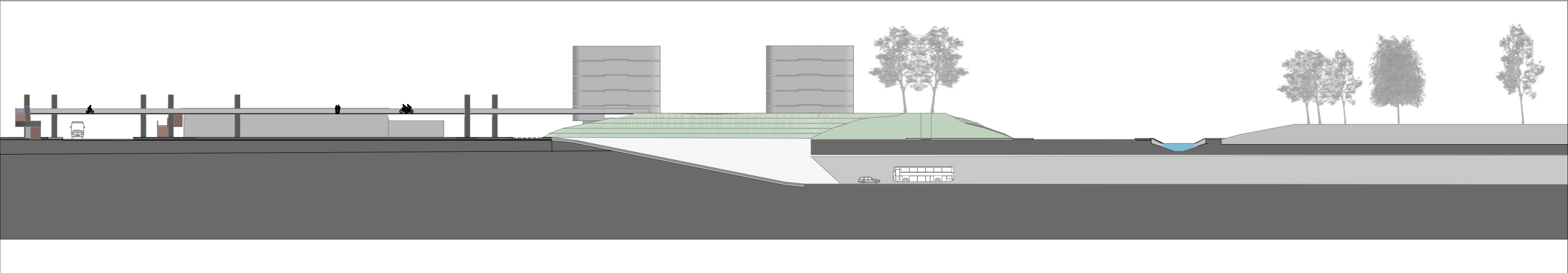
RENDER



SECTION



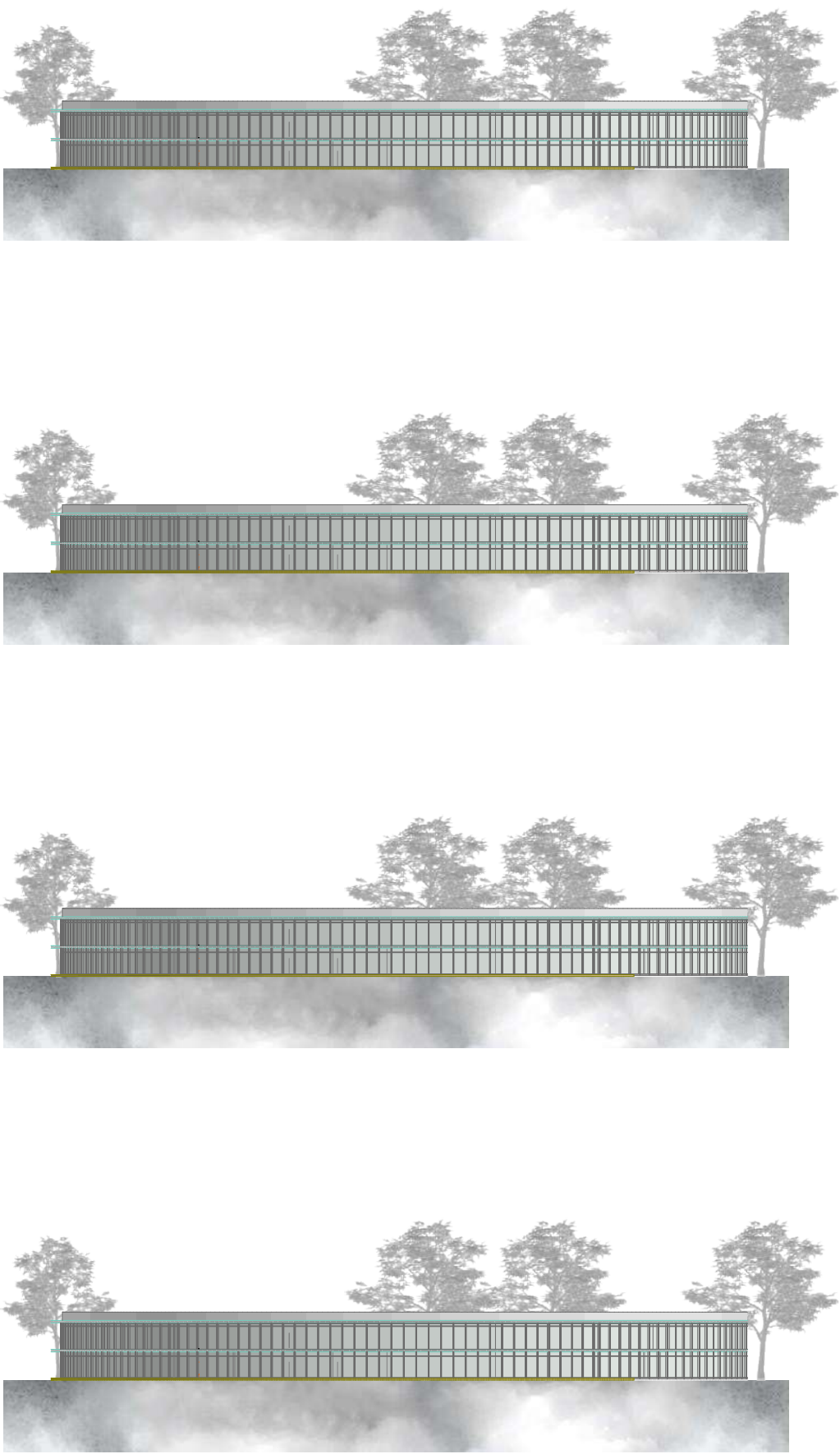
SILHOUETTE



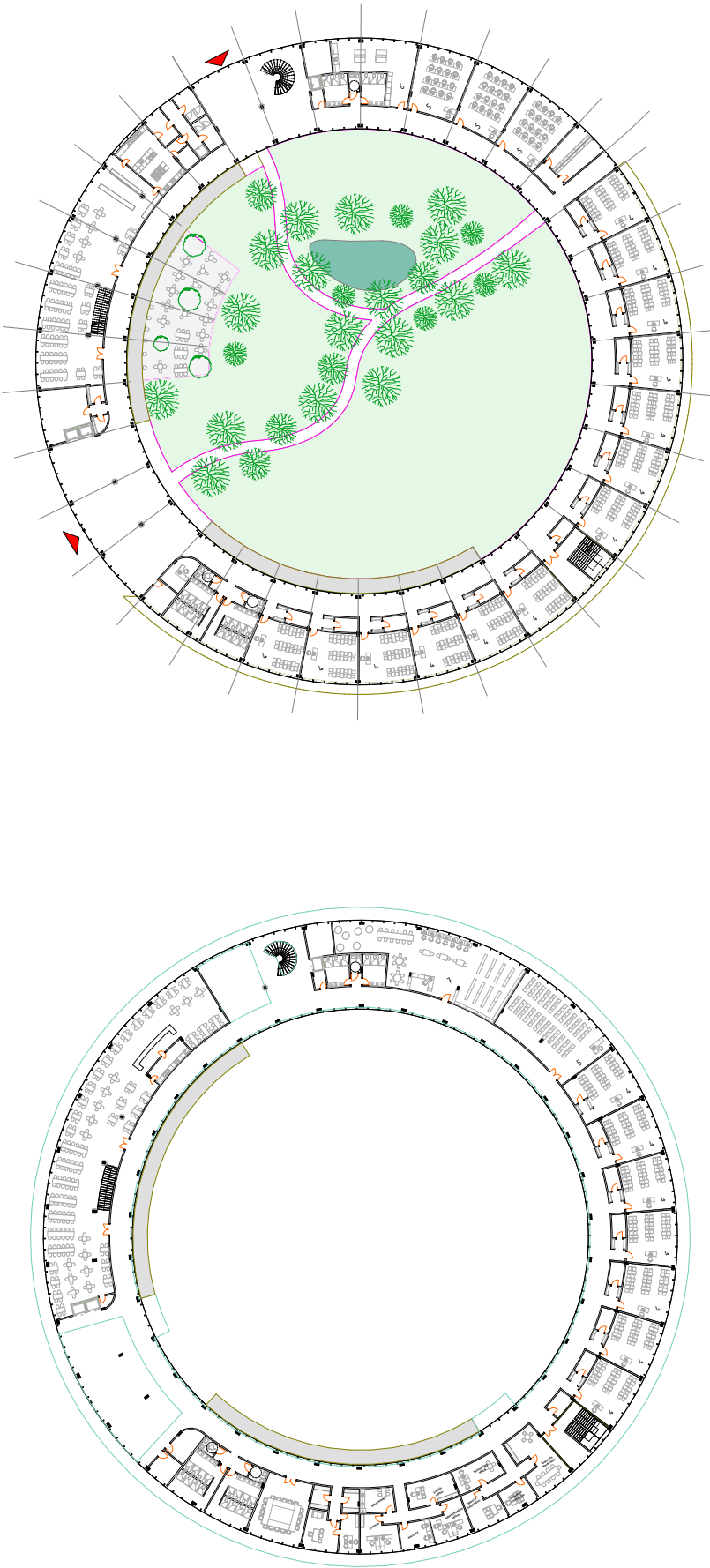


Our care for the existing trees at the Rasadnik quarter is represented with the proposal of diagnostics for all trees in the project area by competent biologist in order to recognize which trees can be replanted in the new designed places of the planned landscape in our project. Also, in the southern area in the Zone 3, we are keeping the whole existing wood that will be incorporated with the new Green Mall of open character, new tennis bar and tennis fields enabling an open public space directly surrounded by nature. The percentage of the greenery (greenery, recreation and memorial spaces) is 45% of the total area of the quarter or 37 hectares.

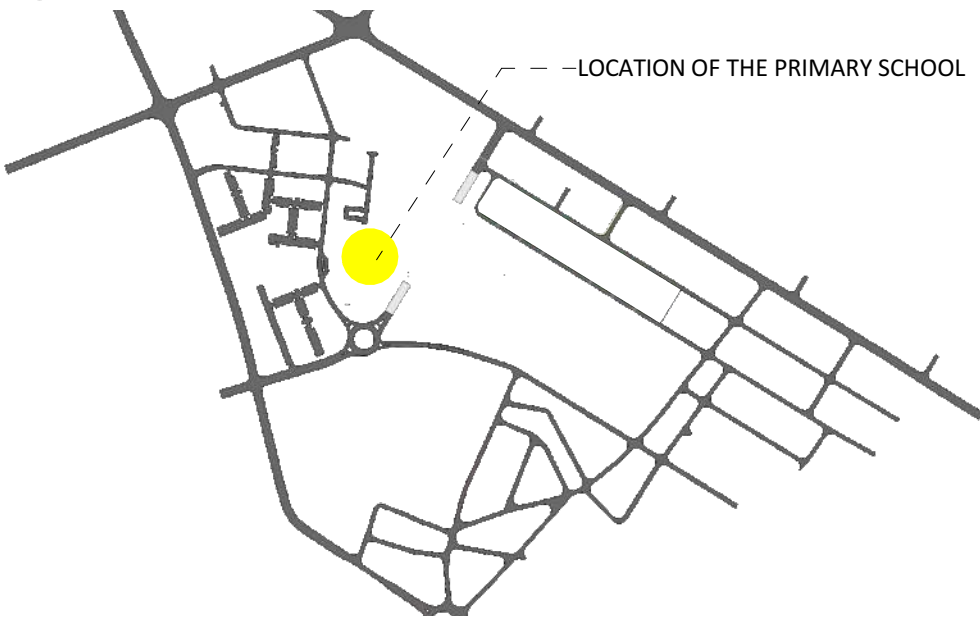
ELEVATIONS



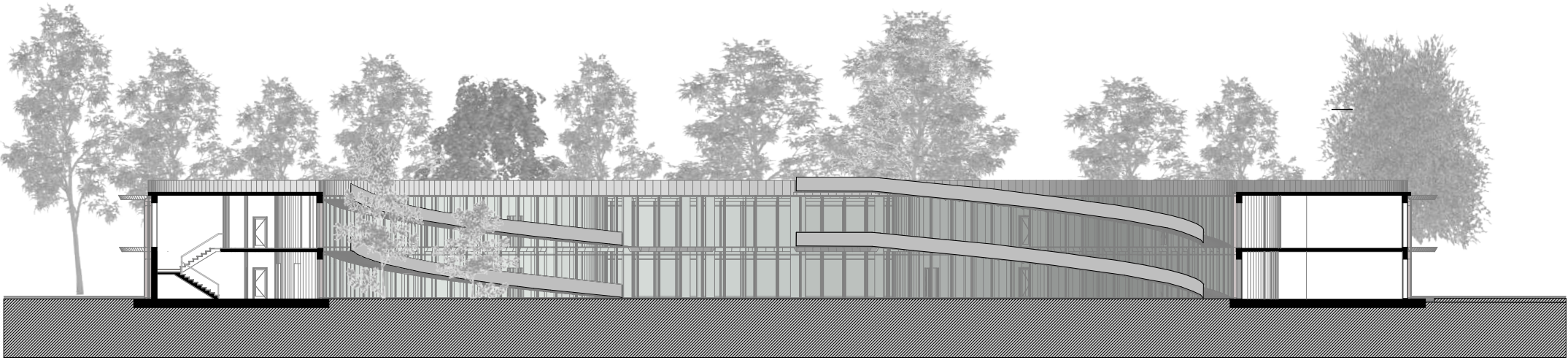
PLANS



LOCATION



SECTION



RENDERS

